

Goat anti-Mouse IgG (Light Chain Specific), HRP Conjugated

Catalog S003F

Tel: 010-82908854

Quantity 100μL

Free: 400-0620-621

Web: www.tdybio.com

For research use only.

Applications	Species Cross-Reactivity	Molecular Weight	Isotype
WB, IHC	Mouse	N/A	IgG

Storage Buffer & Condition: PBS, pH 7.4, 15mg/ml **Bovine Serum Albumin** as Stabilizer and 50% Glycerol.

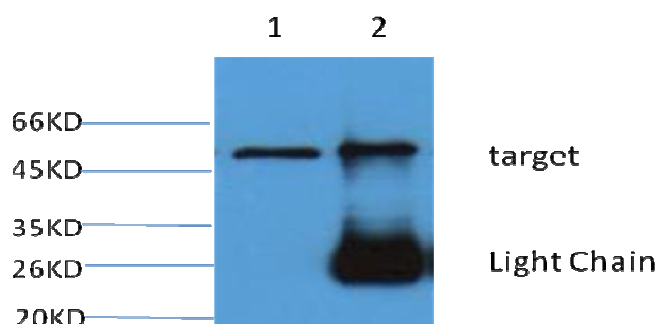
Store at **-20°C**. **Do not aliquot the antibody.**

Recommended dilutions: WB: 1:2,000-5,000 IHC: 1:100-500

Optimal dilutions should be determined by the end user.

Specificity: The antibody reacts with the light chains on Mouse IgG and with those common to other Mouse immunoglobulins. The antibody **does not react with the heavy chain of Mouse IgG**. The antibody minimal cross-reaction with **bovine, goat, horse, human, rabbit, rat, and sheep** immunoglobulins, but it may cross-react with IgG from other species.

Note: **Avoid use of Sodium azide** as a preservative, it will substantially inhibit the enzyme activity of **HRP**.



1、Input

2、IP product

Western blot analysis: primary antibody : mouse monoclonal

Secondary antibody: Goat anti-Mouse IgG, Light chain specific, 1:5000