

## $\beta$ I tubulin Mouse Monoclonal Antibody(Zebrafish Specific)

Catalog	TDY147C	TDY147F
Quantity	50 $\mu$ L	100 $\mu$ L

Tel: 010-82908854  
Free: 400-0620-621  
Web: www.tdybio.com

**For research use only.**

Applications	Species Cross-Reactivity	Molecular Weight	Isotype
WB	Zebrafish	50KD	IgG1

**Storage Buffer & Condition:** PBS, pH 7.4, containing 0.02% **sodium azide** as Preservative and 50% Glycerol.  
Store at **-20°C**. **Do not aliquot the antibody.**

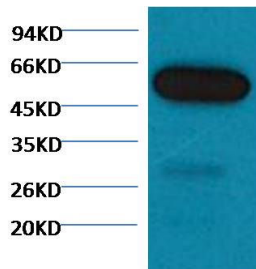
**Recommended dilutions: WB: 1:5,000-10,000**

**Optimal dilutions should be determined by the end user.**

**Specificity:** The  $\beta$  I tubulin antibody can recognize Zebrafish endogenous  $\beta$  I tubulin proteins.

**Alternative Names:** beta I tubulin, TBB1, TUBB1, Tubulin beta 1, Class VI beta tubulin

**Background:** Tubulin is one of several members of a small family of globular proteins. The tubulin superfamily includes five distinct families, the alpha-, beta-, gamma-, delta-, and epsilon-tubulins. The most common members of the tubulin family are  $\alpha$ -tubulin and  $\beta$ -tubulin, the proteins that make up microtubules. Each has a molecular weight of approximately 55 KD. Microtubules are assembled from dimers of  $\alpha$ - and  $\beta$ -tubulin.



Western blot analysis of Zebrafish skeletal muscle with TDY147 diluted at 1:5,000.