

mCherry Mouse Polyclonal Antibody

Catalog	TDY039C	TDY039F	Tel: 010-82908854
			Free: 400-0620-621
Quantity	50μL	100μL	Web: www.tdybio.com

For research use only.

Applications	Species Cross-Reactivity	Molecular Weight	Isotype
WB, IHC, IF, IP	N/A	N/A	IgG

Storage Buffer & Condition: PBS, pH 7.4, containing 0.02% **sodium azide** as Preservative and 50% Glycerol.

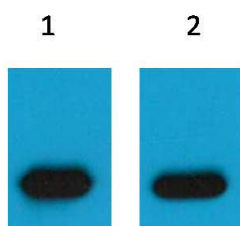
Store at **-20°C**. **Do not aliquot the antibody.**

Recommended dilutions: WB: 1:5,000 IHC: 1:200 IF: 1:200 IP: 1:100

Optimal dilutions should be determined by the end user.

Specificity: The mCherry tag antibody can recognize mCherry and mCherry tag fusion proteins.

Background: mCherry is a fluorophore (a fluorescent molecule) used in biotechnology as a tracer to follow the flow of fluids, as a marker when tagged to molecules and cells components. mCherry is a monomeric fluorescent construct with peak absorption/emission at 587 nm and 610 nm, respectively. It is resistant to photobleaching and is stable. mCherry is sometimes preferred to other fluorophores due to its colour, as well as its photostability compared to other monomeric fluorophores.



Western blot analysis of mCherry Recombinant protein with TDY039 diluted

at

1) 1:5,000

2) 1:10,000