

## CD21 Mouse Monoclonal Antibody(2C5)

Catalog	TDY083C	TDY083F
Quantity	50 $\mu$ L	100 $\mu$ L

Tel: 010-82908854  
Free: 400-0620-621  
Web: www.tdybio.com

*For research use only.*

Applications	Species Cross-Reactivity	Molecular Weight	Isotype
IHC	H,M,R	~113KD	IgG1

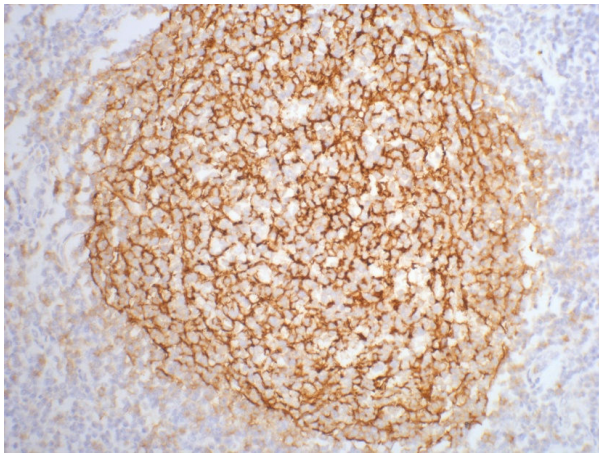
**Storage Buffer & Condition:** PBS, pH 7.4, containing 0.02% **sodium azide** as Preservative and 50% Glycerol.  
Store at **-20°C**. **Do not aliquot the antibody.**

**Recommended dilutions:** IHC: 1:200

**Optimal dilutions should be determined by the end user.**

**Specificity:** The CD21 antibody detects endogenous CD21 proteins.

**Background:** CD21 also known as complement receptor 2 (CR2), C3d receptor or EBV receptor is a 140 kDa protein. CD21 is a glycosylated type I transmembrane protein consisting of an extracellular face of a series of 15 or 16 CCP domains. CD21 is the receptor for complement components C3d and iC3b as well as the Epstein-Barr virus (EBV) glycoprotein gp350/220. The soluble CD21 (sCD21) was shown to efficiently trigger CD23 signalling pathways in human monocytes. By inducing release of proinflammatory cytokines and upregulating expression of molecules involved in antigen presentation, sCD21 modulates critical monocyte functions that may be relevant to allergic and inflammatory disorders.



IHC staining of human tonsil tissue with CD21 mouse mAb(2C5) diluted at 1:200.