

## CK16 Mouse Monoclonal Antibody(6F6)

Catalog	TDY079C	TDY079F	Tel: 010-82908854
Quantity	50μL	100μL	Free: 400-0620-621
			Web: www.tdybio.com

**For research use only.**

Applications	Species Cross-Reactivity	Molecular Weight	Isotype
IHC	H, M, R	~51KD	IgG1

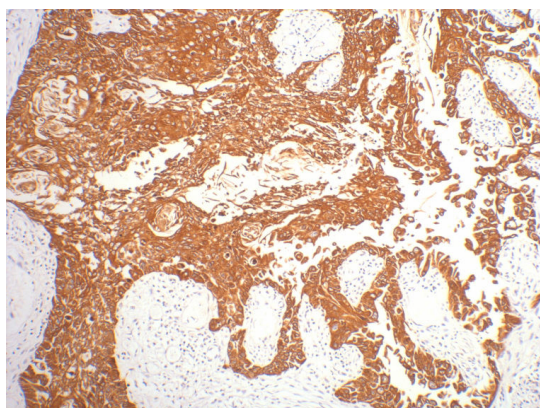
**Storage Buffer & Condition:** PBS, pH 7.4, containing 0.02% **sodium azide** as Preservative and 50% Glycerol.  
Store at **-20°C**. **Do not aliquot the antibody.**

**Recommended dilutions:** IHC: 1:200

**Optimal dilutions should be determined by the end user.**

**Specificity:** The CK16 Mouse Monoclonal antibody detects endogenous CK16 proteins.

**Background:** Keratin 16 is expressed in keratinocytes, which are undergoing rapid turnover in the suprabasal region (also known as hyperproliferation-related keratins). Keratin 16 is absent in normal breast tissue and in noninvasive breast carcinomas. Only 10% of the invasive breast carcinomas show diffuse or focal positivity. Reportedly, a relatively high concordance was found between the carcinomas immunostaining with the basal cell and the hyperproliferation-related keratins, but not between these markers and the proliferation marker Ki-67. This supports the conclusion that basal cells in breast cancer may show extensive proliferation, and that absence of Ki-67 staining does not mean that (tumor) cells are not proliferating.



IHC staining of human gullet cancer tissue with CK16 mouse mAb(6F6)  
diluted at 1:200.