

CD23 Mouse Monoclonal Antibody(1E9)

| | | | |
|----------|---------|---------|---------------------|
| Catalog | TDY072C | TDY072F | Tel: 010-82908854 |
| | | | Free: 400-0620-621 |
| Quantity | 50μL | 100μL | Web: www.tdybio.com |

For research use only.

| Applications | Species Cross-Reactivity | Molecular Weight | Isotype |
|--------------|--------------------------|------------------|---------|
| IHC | H,M,R | 28,38,49KD | IgG1 |

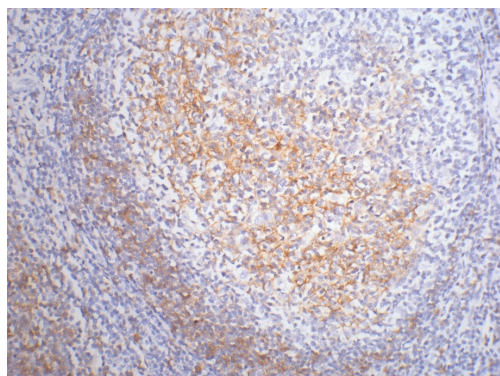
Storage Buffer & Condition: PBS, pH 7.4, containing 0.02% **sodium azide** as Preservative and 50% Glycerol.
Store at **-20°C**. **Do not aliquot the antibody.**

Recommended dilutions: IHC: 1:200

Optimal dilutions should be determined by the end user.

Specificity: The CD23 antibody detects endogenous CD23 proteins.

Background: The CD23 antigen is the low affinity IgE Fc receptor, which is a 49 kDa protein with 38 and 28 kDa fragments. It is expressed on most mature, conventional B cells and can also be found on the surface of T cells, macrophages, platelets and EBV transformed B lymphoblasts. Expression of CD23 has been detected in neoplastic cells from cases of B cell chronic Lymphocytic leukemia. CD23 is expressed by B cells in the follicular mantle but not by proliferating germinal centre cells. CD23 is also expressed by eosinophils.



IHC staining of Human tonsil tissue paraffin-embedded with CD23 mouse mAb (1E9) diluted at 1:200.