

ErbB-2/HER-2 Mouse Monoclonal Antibody(11H9)

Catalog	TDY065C	TDY065F
Quantity	50 μ L	100 μ L

Tel: 010-82908854
Free: 400-0620-621
Web: www.tdybio.com

For research use only.

Applications	Species Cross-Reactivity	Molecular Weight	Isotype
WB, IHC	H, M, R	~138KD	IgG1

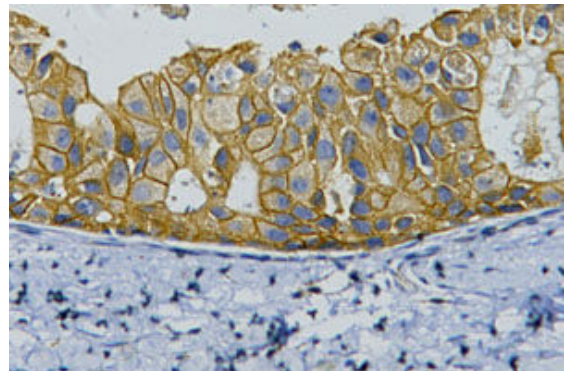
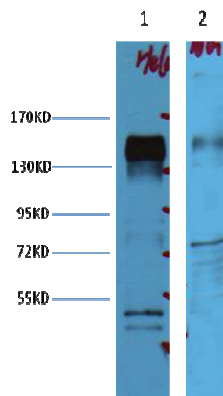
Storage Buffer & Condition: PBS, pH 7.4, containing 0.02% **sodium azide** as Preservative and 50% Glycerol.
Store at **-20°C. Do not aliquot the antibody.**

Recommended dilutions: WB: 1:2,000-4,000 IHC: 1:200

Optimal dilutions should be determined by the end user.

Specificity: The ErbB-2/HER-2 Mouse Monoclonal antibody detects endogenous ErbB-2/HER-2 proteins.

Background: ErbB 2 is a receptor tyrosine kinase of the ErbB 2 family. It is closely related in structure to the epidermal growth factor receptor. ErbB 2 oncoprotein is detectable in a proportion of breast and other adenocarcinomas, as well as transitional cell carcinomas. In the case of breast cancer, expression determined by immunohistochemistry has been shown to be associated with poor prognosis.



Western blot analysis of 1) Hela, 2) Mouse Brain with ErbB-2/HER-2 mAb diluted at 1:4,000.

IHC staining of human breast cancer tissue with ErbB-2/HER-2 mouse mAb(11H9) diluted at 1:200.