

## Flag-Tag Rabbit Polyclonal Antibody

Catalog	TDY021C	TDY021F	Tel: 010-82908854
Quantity	50 $\mu$ L	100 $\mu$ L	Free: 400-0620-621
			Web: www.tdybio.com

**For research use only.**

Applications	Species Cross-Reactivity	Molecular Weight	Isotype
WB,	N/A	N/A	IgG

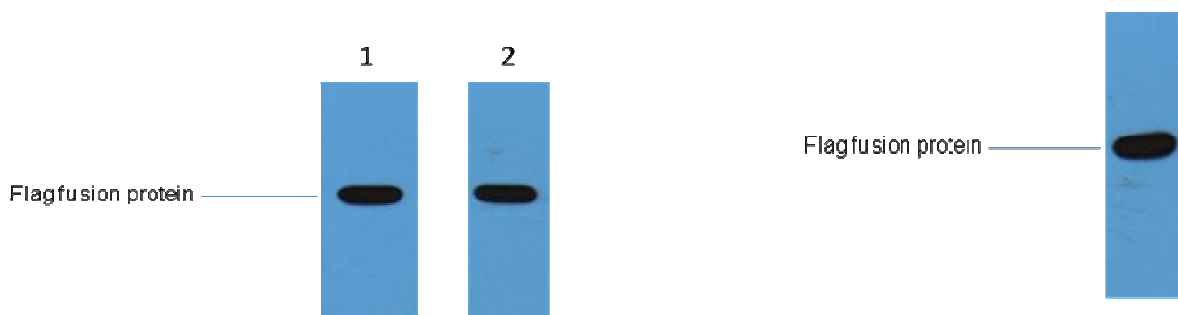
**Storage Buffer & Condition:** PBS, pH 7.4, containing 0.02% **sodium azide** as Preservative and 50% Glycerol.  
Store at **-20°C**. **Do not aliquot the antibody.**

**Recommended dilutions: WB: 1:5,000**

**Optimal dilutions should be determined by the end user.**

**Specificity:** The Flag tag antibody can recognize C-terminal, internal, and N-terminal Flag-tag fusion proteins.

**Background:** The DYKDDDDK peptide (Flag-tag) is a small component of an epitope which does not appear to interfere with the bioactivity or the biodistribution of the recombinant protein. It has been used extensively as a general epitope tag in expression vectors. It can be used for affinity chromatography, then used to separate recombinant, overexpressed protein from wild-type protein expressed by the host organism. It can also be used in the isolation of protein complexes with multiple subunits. A Flag-tag can be used in many different assays that require recognition by an antibody. If there is no antibody against the studied protein, adding a Flag-tag to this protein allows one to follow the protein with an antibody against the Flag sequence.



1 $\mu$ g Flag fusion protein+ Primary antibody dilution at

1、 1:5,000

2、 1:10,000

Transfected 293 cell lysate with Flag-tag fusion protein+ Primary antibody dilution at 1:10,000