

α -tubulin Rabbit Polyclonal Antibody

Catalog TDY054C TDY054F

Tel: 010-82908854

Quantity 50 μ L 100 μ L

Free: 400-0620-621

Web: www.tdybio.com

For research use only.

Applications	Species Cross-Reactivity	Molecular Weight	Isotype
WB, IHC	H, R, M	55KD	IgG

Storage Buffer & Condition: PBS, pH 7.4, containing 0.02% **sodium azide** as Preservative and 50% Glycerol.

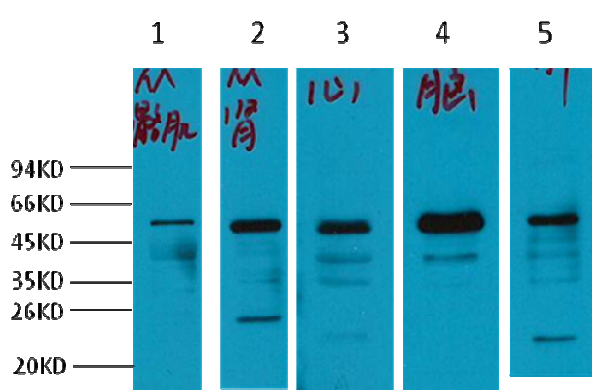
Store at **-20°C**. **Do not aliquot the antibody.**

Recommended dilutions: WB: 1:2,000 IHC: 1:200

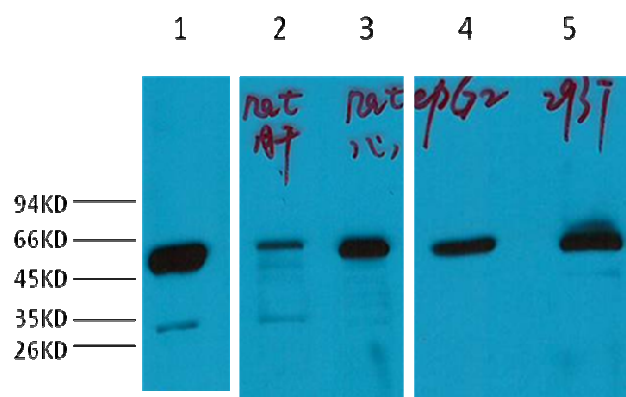
Optimal dilutions should be determined by the end user.

Specificity: Antibody can detect endogenous α -tubulin protein.

Background: Tubulin is one of several members of a small family of globular proteins. The most common members of the tubulin family are α -tubulin and β -tubulin, the proteins that make up microtubules. Each has a molecular weight of approximately 55 kiloDaltons. Microtubules are assembled from dimers of α - and β -tubulin.



Western blot analysis of 1) Mouse skeletal muscle tissue, 2) Mouse kidney tissue, 3) Mouse Heart Tissue, 4) Mouse brain tissue, 5) Mouse Liver tissue with α -tubulin Rabbit pAb diluted at 1:2,000.



Western blot analysis of 1) Rat Brain tissue, 2) Rat Liver tissue, 3) Rat Heart Tissue, 4) HepG2, 5) 293T, with α -tubulin Rabbit pAb diluted at 1:2,000.